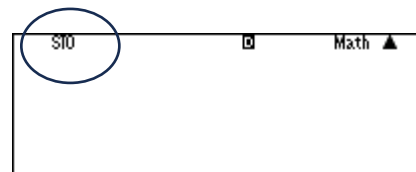


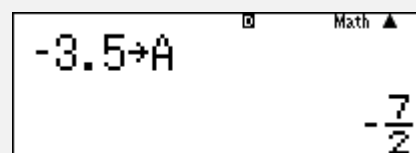
## Module 5 : Area, surface area, and volume problems

### Part A – Store values and recall values

You can use the calculator memory to store and recall value in different letters and recall them for making calculations. Using **SHIFT** **RCL** to store and **RCL** to recall.

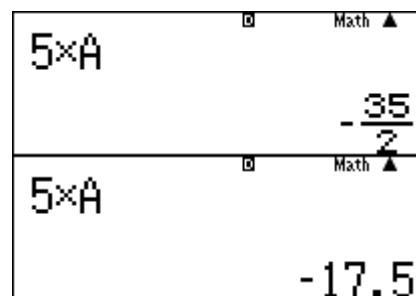


To store a value of -3.5 in letter A, press **(-)** **3** **.** **5** **SHIFT** **RCL** **(A)** **=**.



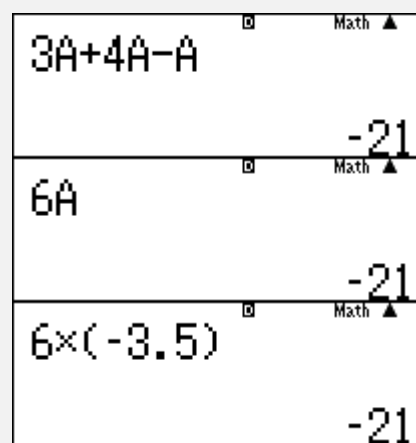
Now you can use the variable A in different calculations and the value -3.5 will be used in its place.

**5** **×** **ALPHA** **(A)** **=** **S→D**



The calculator can be used to collect like terms and calculate a value. This expression is the same as 6A.

**3** **ALPHA** **(A)** **+** **4** **ALPHA** **(A)** **-** **ALPHA** **(A)** **=**  
**6** **ALPHA** **(A)** **=**  
**6** **×** **(-)** **3** **.** **5** **)** **=**



To store multiple values in different variables and calculate with the variables, enter the values and store them.

$\frac{1}{2} \rightarrow A$   
 $-3 \rightarrow B$   
 $7 \rightarrow C$   
 $A \times B - C$

$\frac{1}{2} \rightarrow A$	Math $\frac{1}{2}$
$-3 \rightarrow B$	Math $-3$
$7 \rightarrow C$	Math $7$
$A \times B - C$	Math $-\frac{17}{2}$

To see what is stored in each variable press the  $\text{RCL}$  followed by the letter.

$\text{RCL} \text{ hyp } (C)$

C	Math $7$
---	----------