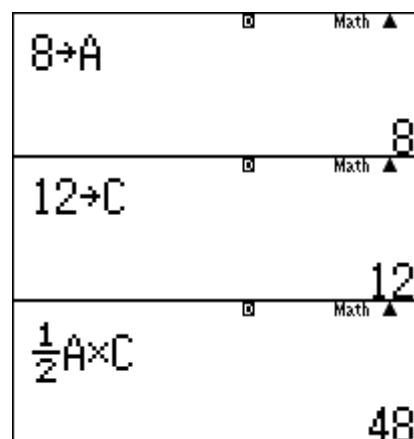


Module 5 : Area, surface area, and volume problems

Part B – Using stored values to calculate area and volume

Enter the values for base and height in the calculator using the triangle area formula.

$8 \rightarrow A$
 $12 \rightarrow C$
 $\frac{1}{2}A \times C$
 $=$



Store the area of the windows (2ft x 4ft) in A

The area of the door (4ft x 7ft) in D

Area of the roof (7.8ft tall) in F

The area of the front of the house (20ft x 12 ft) in X

Calculate the total surface area of the house.

Calculate the volume of the house (20 ft. x12 ft. x30ft.).

